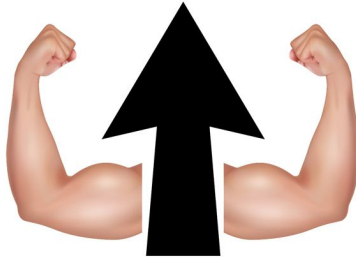


# REBUS PUZZLE COMMON SAYINGS

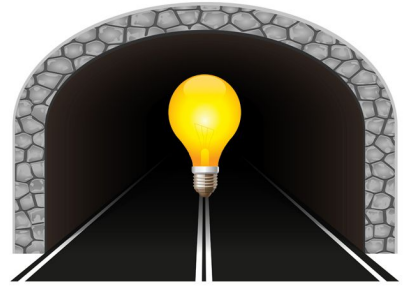
49

**ALL**

50



51



52

**TAKE**



53



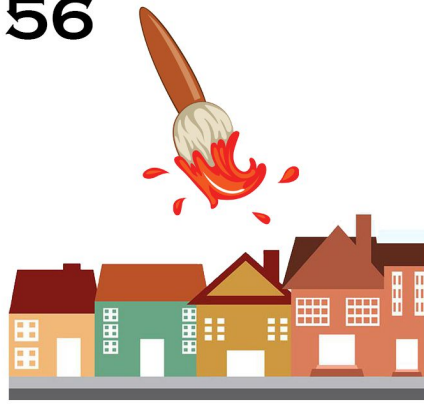
54



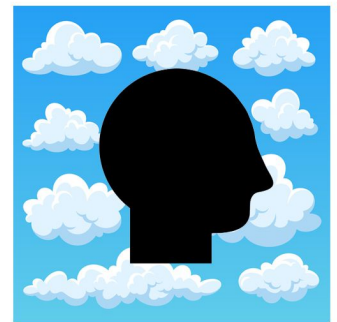
55



56



57



58

**MI ND**

59



60



# REBUS PUZZLE

## COMMON SAYINGS

49. ALL IN ALL
50. UP IN ARMS
51. LIGHT AT THE END OF THE TUNNEL
52. TAKE IT WITH A GRAIN OF SALT
53. ONE FOOT IN THE GRAVE
54. KISS AND MAKE UP
55. SHOOTING STAR
56. PAINT THE TOWN RED
57. HEAD IN THE CLOUDS
58. MIND THE GAP
59. TIME ON MY HANDS
60. BURNING THE CANDLE AT BOTH ENDS