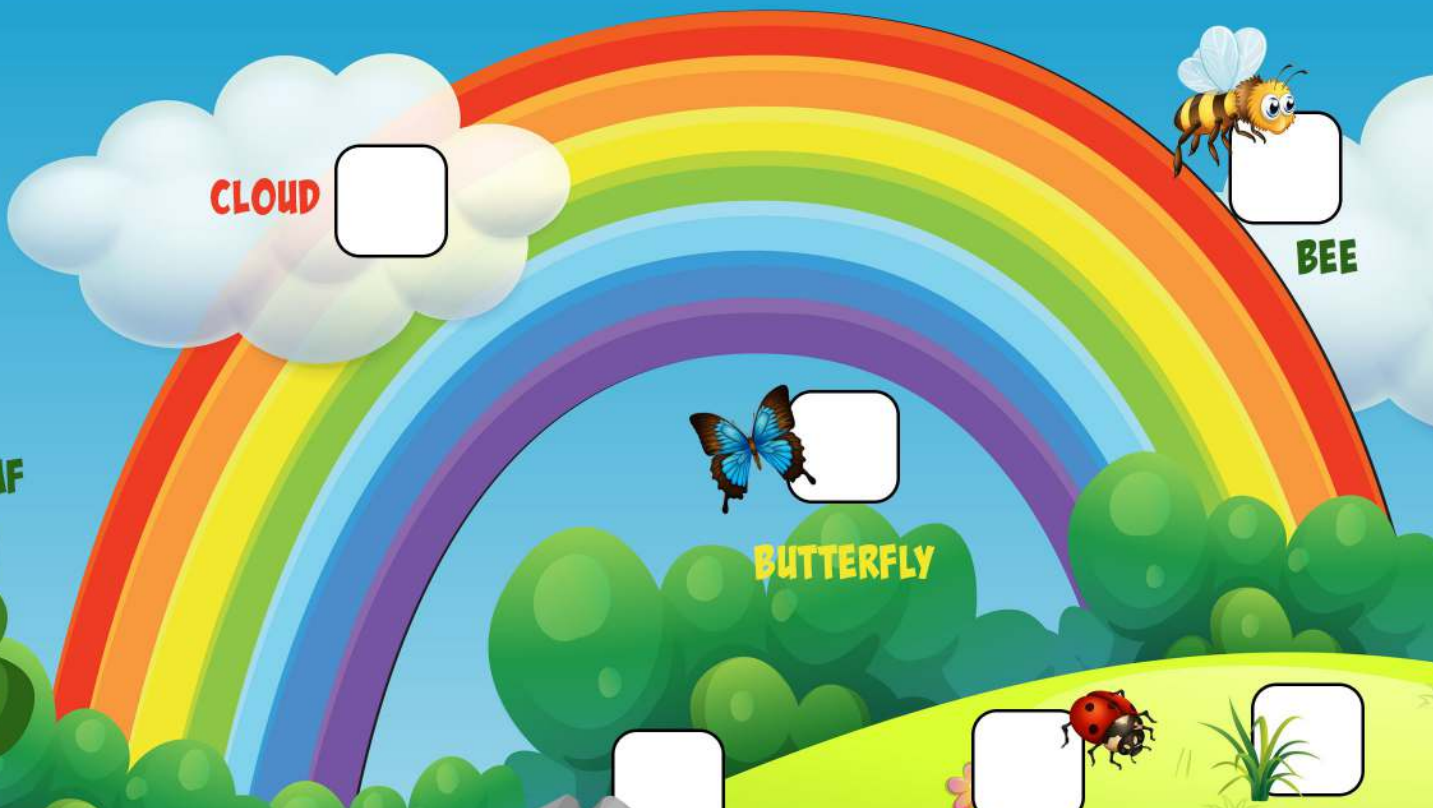


# GARDEN SCAVENGER HUNT



CLOUD

BEE

BUTTERFLY



LEAF

GRASS



LADYBIRD



ROCK



ANT



BIRD

FLOWER



SPADE



POT



TREE

WATERING CAN



SNAIL



SOMETHING SOFT

SOMETHING HARD

SOMETHING SHINY

SOMETHING ROUND

.....

.....

.....

.....